

Enfocus Automation



enfocus

NOTE:

This is a basic guide that has been proven based on previous experience.

All are subject to change without notice.

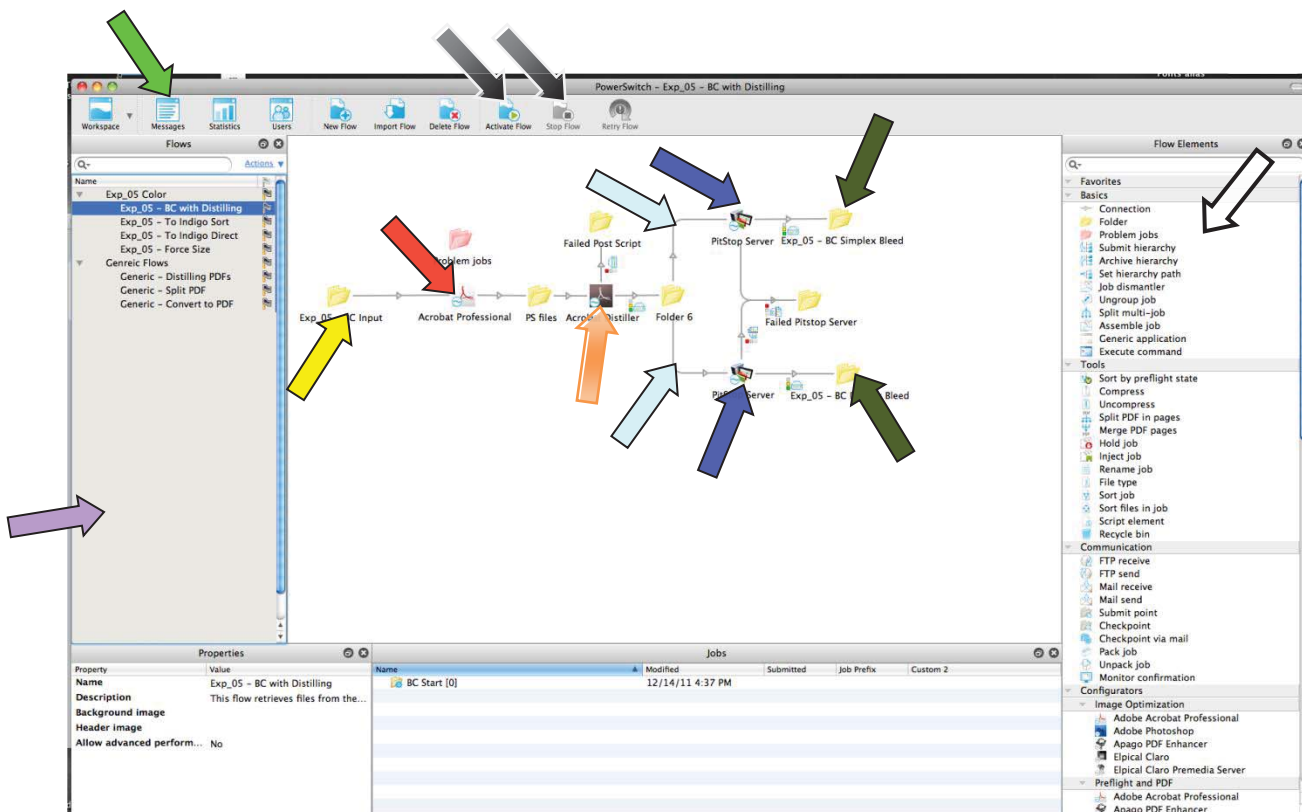
It is the job of the operator to verify everything is running properly regardless of guide.

Explanation Of Automation

Enfocus PowerSwitch

Enfocus PowerSwitch is the main software that uses other software's for automation.

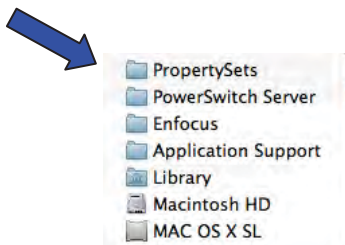
- PowerSwitch Overview
 - On the left side you will see current flows with the running flows having green arrows **Light Purple Arrow** next to them.
 - To Start and Stop flows use the Activate and Stop Flow buttons **Black Arrows** at the top of the PowerSwitch Window.
 - Make sure that there are no warnings or they will not stop properly.
 - On the right side are the configurators and elements **White Arrow** used for flows.
 - To find information about flow performance or error use Messages **Green Arrow**.
- PowerSwitch Example Flow
 - In this flow you have Business Card PDFs being dropped in \\xxx\PITSTOP SWITCH Folder_Exp_05\Exp_05 - BC Input Folder **Yellow Arrow**.
 - The PDF will then be converted to a PostScript document in Acrobat **Red Arrow**.
 - The PostScript goes to Distiller **Orange Arrow** to be converted back to a PDF.
 - The cleaned PDF will now be directed to simplex or duplex flow using metadata **Light Blue Arrow**.
 - The files are resized and fonts embedded using Server Profiles **Blue Arrows**.
 - They are now sent to the Indigo \\xxx\jobs on indigo\Exp_05\Exp_05 - BC_xxxxx_Bleed **Dark Green Arrows** and imposed.



Originals Files

The Originals files are the lists for files already downloaded from FTP sites so it will not pull them down again.

- There are occasionally issues where you will need to replace them with other versions from the Time Machine Backup.
 - The path to navigate to the folder is **Blue Arrow**.
 - In Use Path - xxx/Macintosh HD/Library/Application Support/Enfocus/PowerSwitch Server/PropertSets
 - Backup Path - 1TB HD/Desired Date/xxx/Macintosh HD/Library/Application Support/Enfocus/PowerSwitch Server/PropertSets
- The files “leaveOriginalsList” **Green Arrows** under the designated PropertySets folder are xml data list files that are created once files are downloaded.
- If Enfocus Switch seems to be re-downloading files already downloaded you should go to a known good backup of the originals list and replace the one in the “In Use Path”.
 - You must stop the flow that uses the originals list to replace it.
 - Once stopped the file time will reflect the updated list.
- ***The Originals files do not get saved till the flow is stopped so it is recommended to stop the flow regularly to have good backups.***

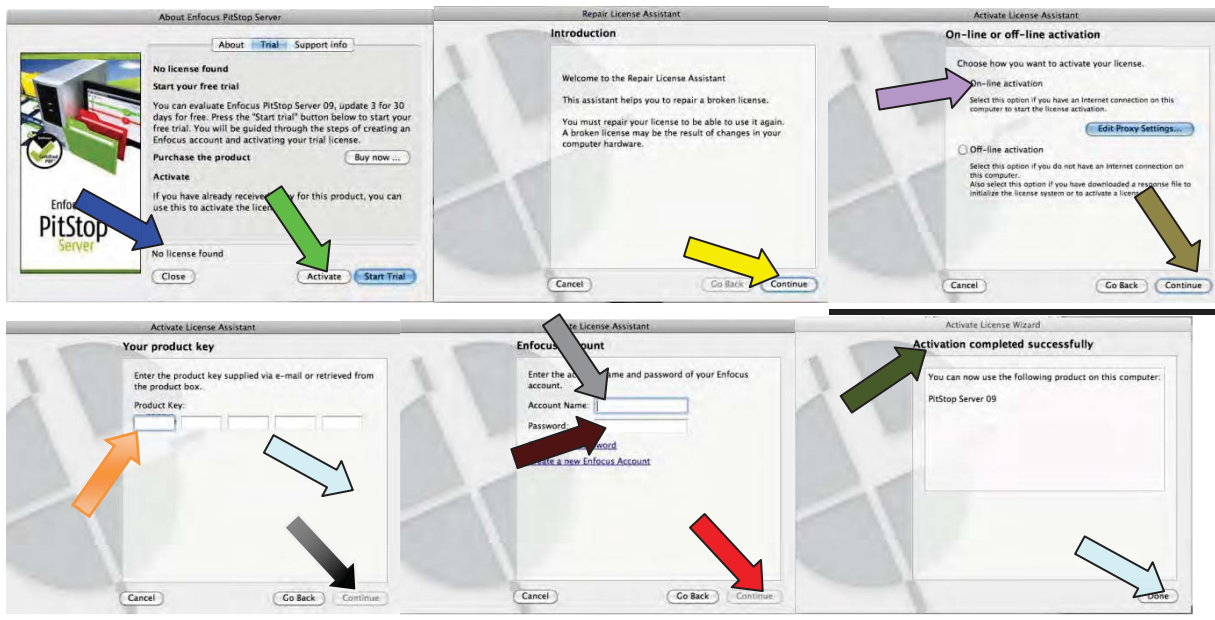


Activation

Activating or Reactivating

At some point you may need to use the following steps to Activate or Reactivate the Enfocus Products.

- You will need to activate the software if you see “No license found” **Blue Arrow**.
- To activate click the “Activate” button **Green Arrow**.
- Continue past the next screen **Yellow Arrow**.
- Choose “On-Line activation” **Light Purple Arrow** and choose Continue **Earth Color**.
- Put in the Product Key **Orange Arrow** and choose continue **Black Arrow**.
 - You can copy it from the “Enfocus Licenses” file from the desktop but a known bug may force you to key it in for it to recognize it.
 - Switch 9 - xxxxxxxx
 - Switch 9 Serial # - xxxxxxxx
 - Switch 9 Contract (Support) # - xxxxxxxx
 - Switch 10 - xxxxxxxx
 - You must enter Switch 9 then activate a 2nd time w/ 10
 - Server 9 - xxxxxxxx
- Put in the Enfocus Account information then choose continue **Red Arrow**.
 - User Name: xxxxxxxx **Gray Arrow**.
 - Password: xxxxxx **Redish Brown Arrow**.
- You should see and “Activation completed successfully” **Dark Green Arrow** and can click “done” **Light Blue Arrow**.

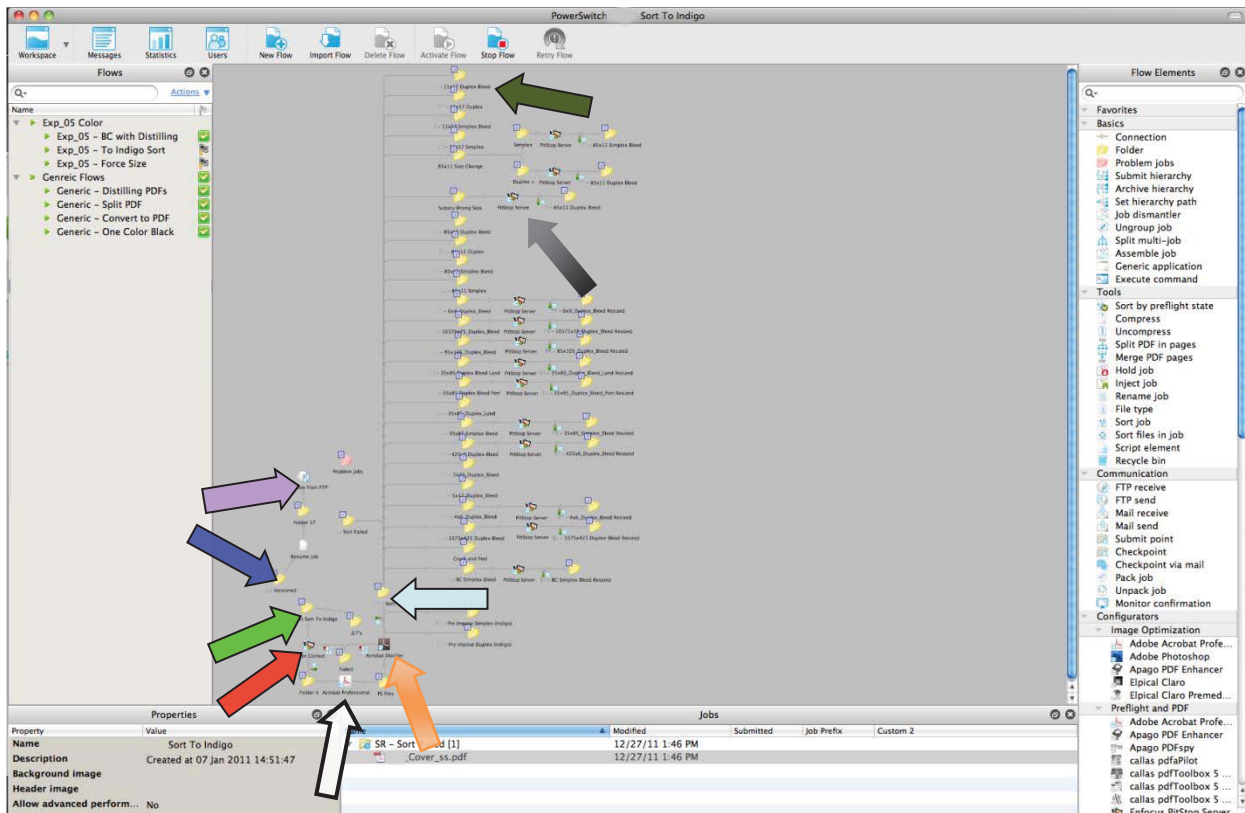


Automation Examples

Switch Examples

Enfocus PowerSwitch is the main software that uses other software's for automation.

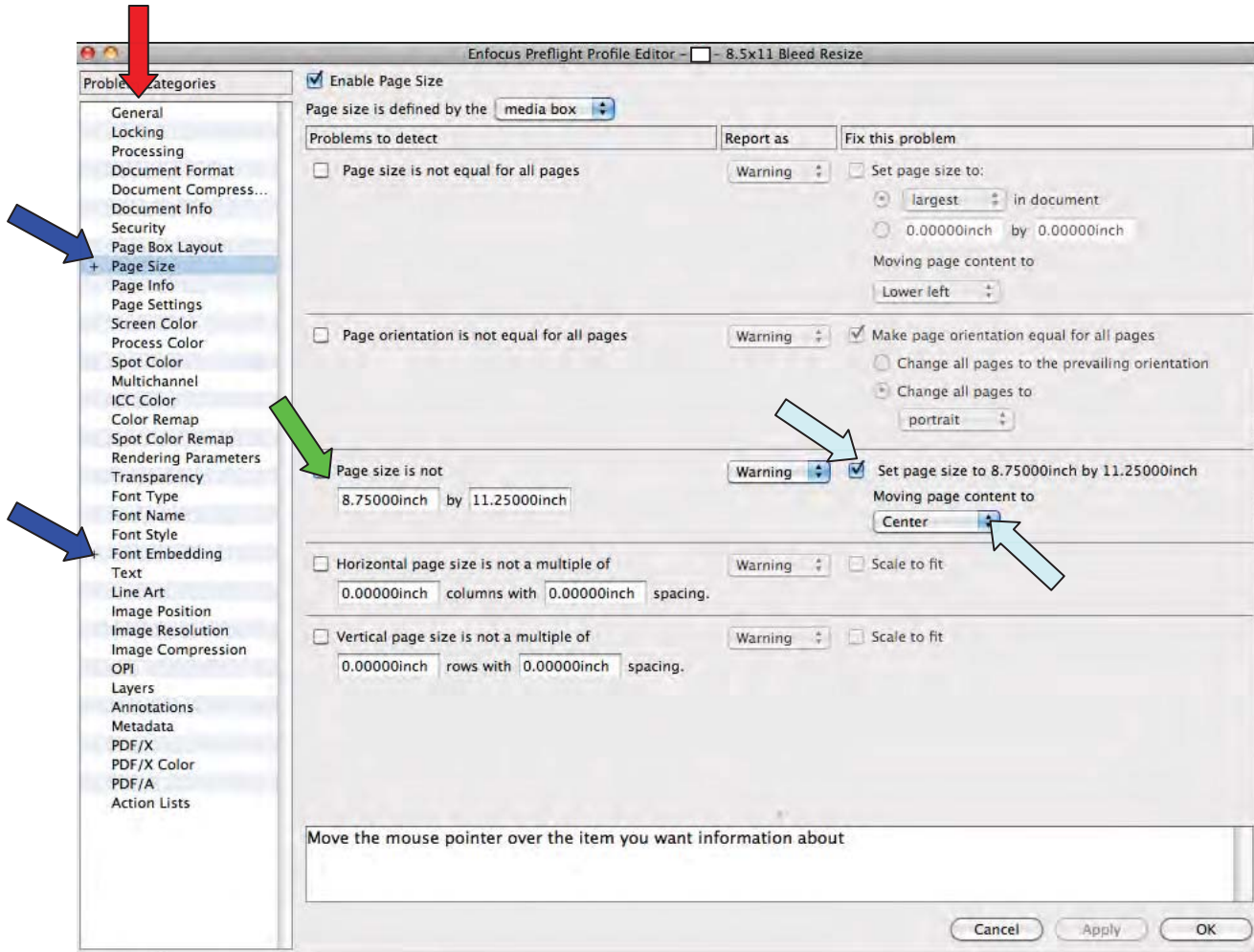
- XX – Sort To Indigo: Used for xxxxxxx and XX jobs that don't have a specific flow.
 - This flow automatically pulls down Versioned files using FTP receive Element **Light Purple Arrow**.
 - Downloaded versioned files can be found in "XX Versioned" **Blue Arrow**.
 - You can drop the directly from the "XX Versioned" folder **Blue Arrow** in the flow to "XX – Input Sort..." **Green Arrow**.
 - In this flow you have XX jobs being dropped in \\xxx\PITSTOP SWITCH Folder_XX\XX - In\XX - Input Sort To Indigo **Green Arrow**
 - JLT Files (Files created through SmarStream) are directed using known file patterns to \\xxx\jobs on indigo\XX\XX - Pre Impose Simplex.
 - Colors are setup in SmartStream and are not changed through the flow.
 - PDF's will go through the flow and Color Corrected using Server **Red Arrow**.
 - The Color Corrected PDF will then be converted to a PostScript document in Acrobat **White Arrow** to be cleaned of issues.
 - The Color Corrected file goes to Distiller **Orange Arrow** to be converted back to a PDF for automation.
 - The cleaned PDF will now be directed to the correct size folder using metadata **Light Blue Arrow**.
 - Some files can be sent directly to the Indigo for imposing **Dark Green Arrow**.
 - Other files require modification so they can be imposed properly **Black Arrow**.



Pitstop Server Examples

Enfocus Pitstop Server is used to Preflight PDF's and correct some aspects of the files.

- XX – 8.5x11 Bleed Resize Profile: Used to resize XX PDF's to 8.75x11.25.
 - This profile checks and corrects “Page Size” and “Font Embedding” **Blue Arrow**
 - Page size is checked to be 8.75x11.25 **Green Arrow**.
 - If the file isn't correct it is set to 8.75x11.25 and centered **Light Blue Arrows**.
- There are many other checks and corrections that are available **Red Arrow**.



MetaData in Switch

MetaData is data about data. It is info attached to files about the file.

- When choosing a link between folders in Switch to “Include these file” “Condition with variables defined” you will get a screen to input metadata **Blue Arrow**.
 - To pick the desired metadata click “...” box **Green Arrow** to display options.
 - You can now navigate to “Stats” **Light Blue Arrow** and choose your metadata set like “NumberOfPages” **Red Arrow**.
 - To select you metadata set you must click “Insert variable” **White Arrow**

